



立堉集团
LEY CHOON GROUP



INTEGRATED
SOLUTIONS AT
YOUR FINGERTIPS

Ley Choon Group of Companies

is an established one-stop Underground Utilities Infrastructure Construction and Road Works service provider.

Our services include:

- **Underground Utilities Infrastructure Construction & Maintenance Services:** Laying and repairs of water pipes, NEWater pipes, high-pressure gas pipes, high-voltage power cables, fibre optic cables and sewer pipeline rehabilitation;
- **Road & Airfield Pavement Construction & Maintenance Services:** Supply and laying of graded stone, cement treated base, milling and laying of asphalt premix;
- **Construction Materials Supply Services:** Production of asphalt premix and recycled aggregates from construction and demolition waste.

Our Major Tender Heads (Building & Construction Authority - BCA):

- 1) **CR07 - Cable/Pipe Laying & Road Reinstatement**
 - L6 Registered Contractor (Highest Grade & Unlimited Value)
- 2) **CW02 - Civil Engineering**
 - A1 Registered Contractor (Highest Grade & Unlimited Value)

Our trusted and valued clients include Government Agencies, Statutory Boards, Building and Civil Engineering contractors and other MNCs.

Ley Choon Group is headquartered in Singapore with regional business presence in Sri Lanka and China. Our subsidiaries:

- Ley Choon Constructions and Engineering Pte Ltd
- Multiform Developments & Construction Pte Ltd
- Chin Kuan Engineering and Contractors Pte Ltd
- Teacly (S) Pte Ltd - HQ: Singapore, Branch: Sri Lanka
- Pan Alliance Technology International Pte Ltd
- Ley Choon (Yantai) Eco-Green Construction Materials Ltd

VISION

To be a leading one-stop regional service provider of Underground Infrastructure Construction, Road and Airfield Construction and Maintenance, Asphalt Premix Production and Construction Waste Recycling.

MISSION

We aim to provide timely and reliable integrated solutions while building a strong team of in-house expertise and developing advanced machinery and technology to best serve the individual needs of our customers.



**SHAFT CONSTRUCTION,
JET GROUTING & PIPE
JACKING**

**ASPHALT,
AIRFIELD, ROAD
CONSTRUCTION
& MAINTENANCE**



**INTEGRATED
SOLUTIONS AT
A GLANCE**



PIPELINE WORKS



SPECIALITY WORKS



**SEWER REHABILITATION
WORKS & CCTV
PIPELINE SURVEY**

ASPHALT, AIRFIELD, ROAD CONSTRUCTION & MAINTENANCE



1. ASPHALT PRODUCTION

State of the art facility capable of supplying a comprehensive formulation of asphalt products.

Supported by intensive Research & Development efforts with high-tech laboratory and field testing equipment.



2. CONSTRUCTION WASTE RECYCLING

Processing of construction waste into high quality reusable products for various commercial applications.

Sustainable and environmentally-friendly construction practices to reduce dependency on raw materials.



3. CONSTRUCTION AND MAINTENANCE OF ROADS AND AIRFIELD PAVEMENT

Build & Maintain (Milling & Patching)

- Roads
- Expressways
- Airfield Pavements by Changi Airport Group



4. ROADWORKS AND TRAFFIC DIVERSION

- All types of roads and traffic junctions
- Civil Engineering Works
- Temporary Diversions and Final Reinstatement Works

SHAFT CONSTRUCTION, JET GROUTING & PIPE JACKING

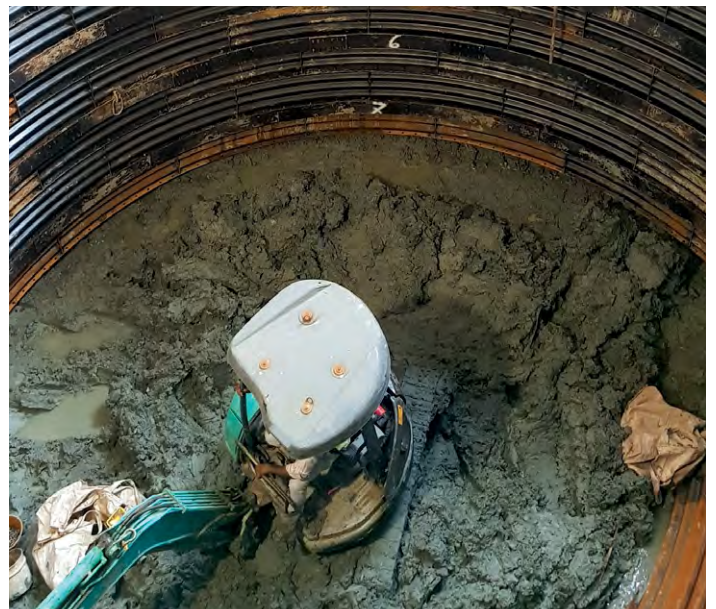
5. PIPE JACKING WORKS

- State of the art technology: Tunneling with laser and gyro guidance.
- Jacking machine ranging from 250mm - 3000mm in diameter are available in-house to operate in different geological terrains and rock-soil formations.
- Large diameter steel pipes can be jacked through bored tunnels.
- Specialised Pipe Jacking team.



6. SHAFT CONSTRUCTION AND JET GROUTING WORKS

Jet grouting works is necessary for the construction of jacking and receiving shaft; works of up to 35m in depth can be executed.



PIPELINE WORKS



7. UTILITY SERVICE DIVERSION

- Water Pipes
- Gas Pipes
- Power Cables
- Sewer Pipes



8. LAYING OF POTABLE WATER AND NEWATER MAINS

- Pioneers in the market since inception in 1990: Water Mains and NEWater Pipe installation.
- Relevant and up-to-date technical know-how and experience in the local market.
- For pipes from 100mm - 2,200mm in diameter.



Small Diameter Pipe: Laying of NEWater Mains.



Big Diameter Pipe: Laying, installation and commissioning of 2 x 1,200mm, 2 x 2,200mm diameter water pipelines inside 50m depth and 3.6km length of sub-sea tunnel.



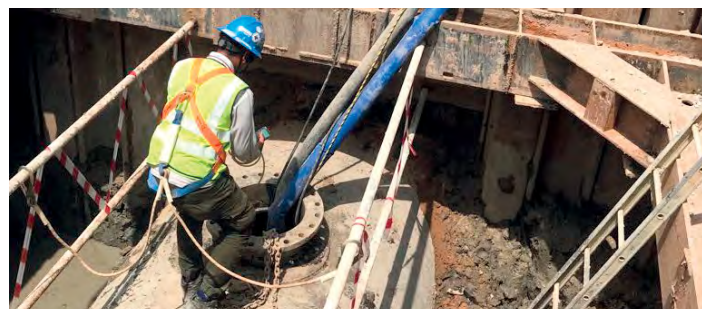
Big Diameter Pipe: Laying of 2,200mm diameter pipeline.

9. URGENT REPAIR OF WATER PIPELINES

- Strong in-house 24 hours urgent repairs team allows for quicker response and mobilisation to affected sites with leaks.
- Reduce water loss due to leaks.



Urgent repair of 150mm water pipe leak.



Urgent repair of 2,200mm NEWater Pipe: Excavation and shoring works to repair 2,200mm NEWater pipe leak.

10. HOT TAPPING OF WATER PIPELINES (SPLIT TEE MACHINE AND TALBOT FERRULE TAPPING)

PIPELINE WORKS
(CONT)



Under pressure drilling works with stainless steel split tee to tee-off connections from the existing water main without affecting any user along the network.

Under pressure tapping of 20mm and 25mm talbot ferrule for copper pipe connection works.

11. LIVE WATER MAIN VALVE INSTALLATION



For pipes of various sizes (100mm - 300mm dia). Do not require any shut down of valves and no water interruption for users.

12. LAYING OF GAS PIPELINES



One of our core competency is also in the laying of Gas Transmission and Gas Distribution pipelines.



We embark on associated work for testing and commissioning of the gas pipelines for integration to the Gas Offtake and Gas Metering Stations.

13. LAYING OF POWER CABLES

We specialise in trenching, pipe laying and installation of transmission and distribution cables.



14. LAYING OF SEWER PIPELINES



SEWER REHABILITATION WORKS & CCTV PIPELINE SURVEY

Trenchless technology re-line sewers without the need for excavation.

15. SEWER SURVEY WORKS

Services:

- CCTV pipeline surveys, including Sonar Scanning
- Chemical grouting and sealing of manholes



Small Diameter Pipe: Pre-Con Survey Works



Small Diameter Pipe: Post-Con Survey Works



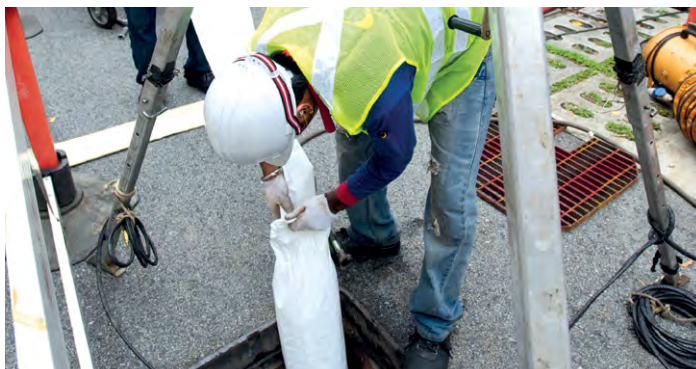
Big Diameter Pipe: Pre-Con Survey Works

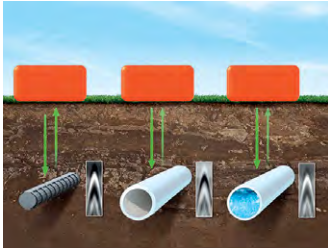


Big Diameter Pipe: Post-Con Survey Works

16. REHABILITATION OF SEWER & WATER PIPELINES BY:

- Form and Fold
- Cured-in-place pipe (CIPP) Lining
- UV Lights
- Spiral Wound





17. GROUND PROBING RADAR SCANNING (GROUND-PENETRATING RADAR, GPR)

Radar pulses are used to image the subsurface and locate underground utilities. Since GPR detects variations in dielectric properties in the subsurface, it can be highly effective for locating non-conductive utilities.



18. UNDERGROUND CABLE DETECTION WORKS

Cable detection is a method that determines whether there are underground services and locates them with the use of specialised cable detection equipment.

We have an in-house Licensed Cable Detection Worker (LCDW), team and equipment for cable detection.



19. SUCTION EXCAVATION WORK AND RENTAL

- Suction capacity of 26m (Vertical) by 60m (Horizontal).
- Safe excavation that eliminates damage of underground utilities.
- Available for rental.

Uses:

- Remove slurry from shaft
- Remove aggregate from internal of buildings (i.e. Substations)
- Remove soil from manual tunneling



20. SILENT PILER WORK AND RENTAL

- Eliminates noise pollution; requires less workers and no risk of overturning.
- Auger bored to deeper depth with reduced vibration as compared to conventional vibro hammer.
- Requires less work force.
- Available for rental.



21. SALES AND RENTAL OF PORTABLE CCTV SET AND TRAFFIC LIGHT

- For crowd and traffic control, anti-theft, safety and security, event recording.
- 24hr to 48hr battery-operated system.
- Can be viewed and controlled via mobile device/computer; ease of use.
- Day/night/total darkness operation with wide-angle cameras. Pan/tilt/zoom up to 300m.
- Usable in all-weather operations.
- Used on LTA, PUB, PowerGRID, PowerGAS, SingTel projects and more.

22. HORIZONTAL DIRECTIONAL DRILLING (HDD)

Pipe laying and cable installation can be executed through Horizontal Directional Drilling (HDD).

- Non open cut trenching method for under-crossing of canals, expressways and heavy traffic junctions.
- Reduces the necessity of removing permanent structures through excavation.
- Minimises noise pollution, environmental risks, and is safer than open-trench pipe construction.

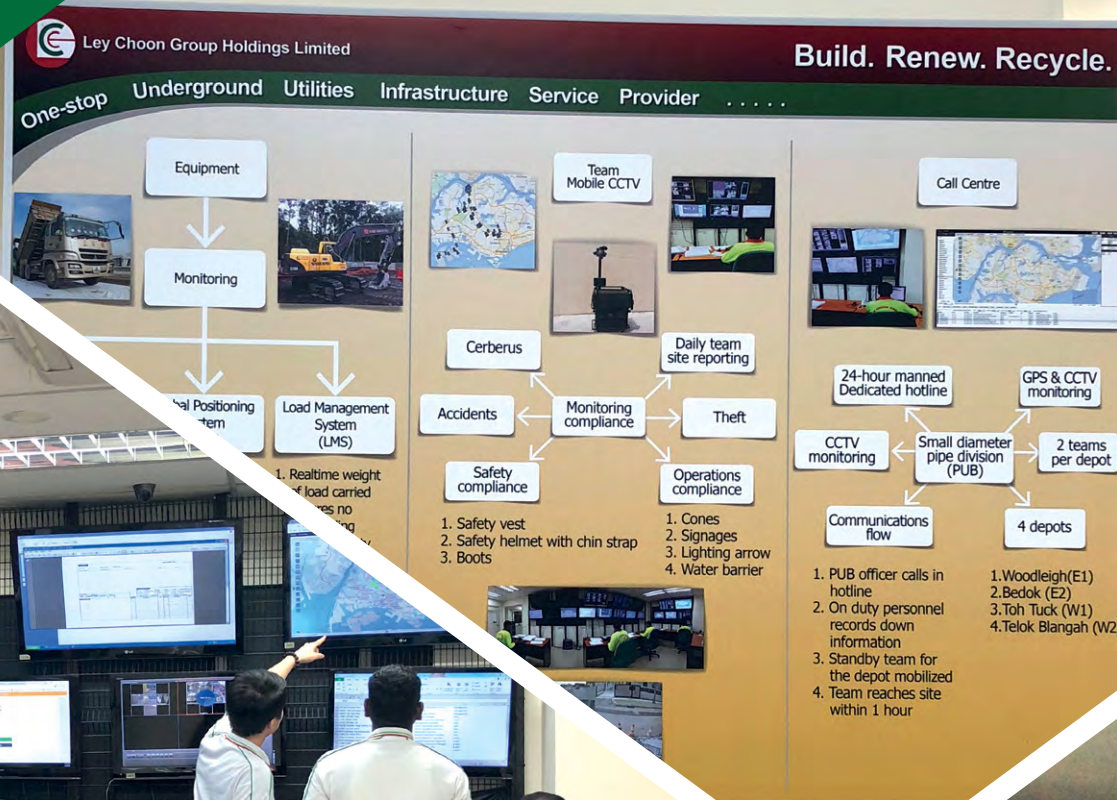


TOTAL LENGTH OF PIPES LAID (IN METRES) FROM YEAR 2009 TO 2017

TYPE	OPEN CUT	PIPE JACKING	HORIZONTAL DIRECTIONAL DRILLING
POTABLE WATER	438,742		
NEWATER	65,326	7,398	
SEWER	1,046	8,616	
GAS	27,100	5,696	
CABLE PIPE			3,861

PIPE LAYING TRACK RECORD

OPERATIONS COMMAND CENTRE



Our Centralised Operations Command Centre operates 24 hours and 7 days a week to:

- Provide real-time surveillance of the Group's operations
- Serve as a 24-hour call centre for all emergency mobilisation
- Serve as an information hub for the Group's operations

The centre's capabilities include:

- Real-time video monitoring of work-sites via Mobile CCTV
- Real-time tracking of our vehicles and machinery via a fleet management system
- Real-time tracking of workers time-in and time-out via an attendance tracking system

HUMAN RESOURCES

At Ley Choon, we believe in diversity and equal opportunities as we strive for employee excellence. We ensure fair work practices and remuneration is based on individual work performance. We are committed to invest in employee training and education. As part of our Human Resources strategy, we promote employee wellness and work-life harmony. To promote staff engagement and team spirit, we encourage all staff to partake in activities organised year-round such as Annual Appreciation Dinner and Team Building Activities.





Ley Choon Group Holdings Limited (Company Registration No. 198700318G)

No. 3 Sungei Kadut Drive, Singapore 729556 | Tel: (65) 6757 0900 | Fax: (65) 6757 0100

Email: admin@leychoon.com | www.leychoon.com

